

This takes approx 10 minutes

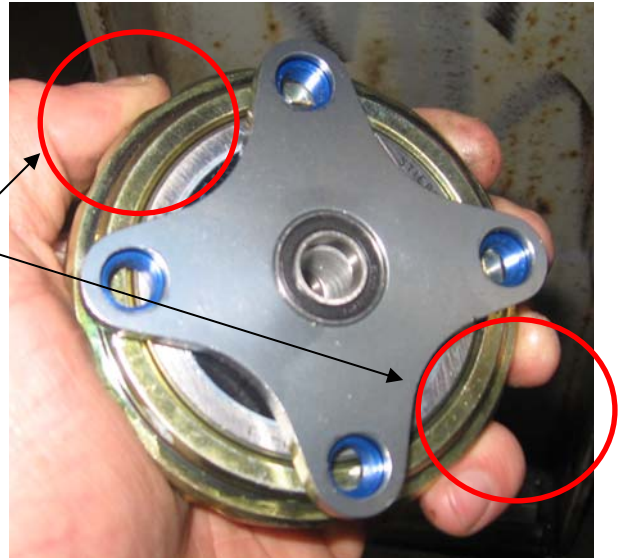
Difficulty rating - medium

Before Starting you will need:

- 5mm allen key to remove chain ring bolts
- Chain whip to hold sprocket during tightening
- Hammer
- Metal/wood blocks
- Socket / strong tubing

1. Remove chain ring

Areas that must be supported when pressing Drive carrier out of Drive clutch



2. Sit clutch assembly on blocks that support areas indicated

Assembly sat on blocks

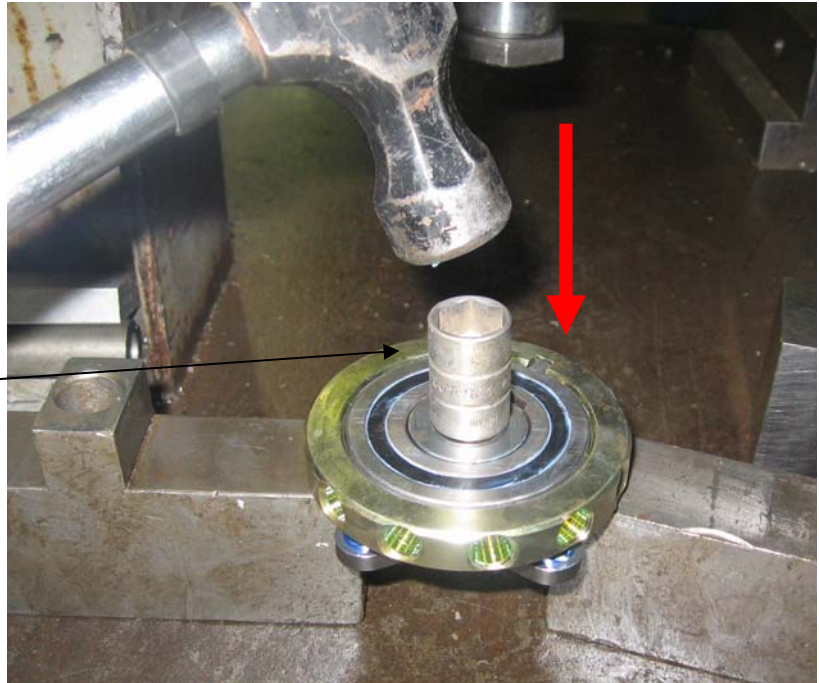


This image shows the areas that must be supported as if viewed from underneath.



3. Remove sprocket carrier from Drive clutch bearing by applying force to a block (e.g a socket) placed in the centre

Apply force to centre of unit so Sprocket Carrier is pushed out of Drive clutch bearing



Sprocket
Carrier

Inner Key

Drive Clutch

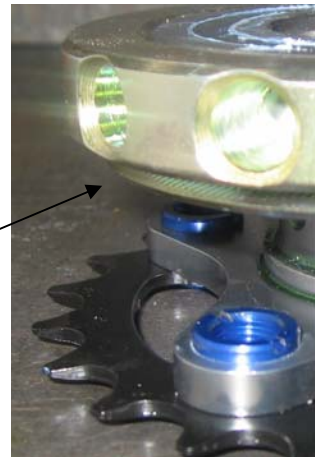




Support edges of Engagement Ring and with a round block, push out the drive clutch bearing.

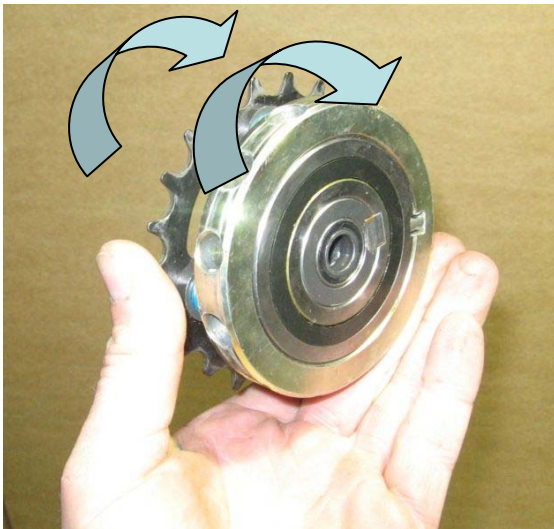
Check orientation of freewheel direction of bearing so that bearing freewheels in correct direction.

Press back together with Bearing in correct direction

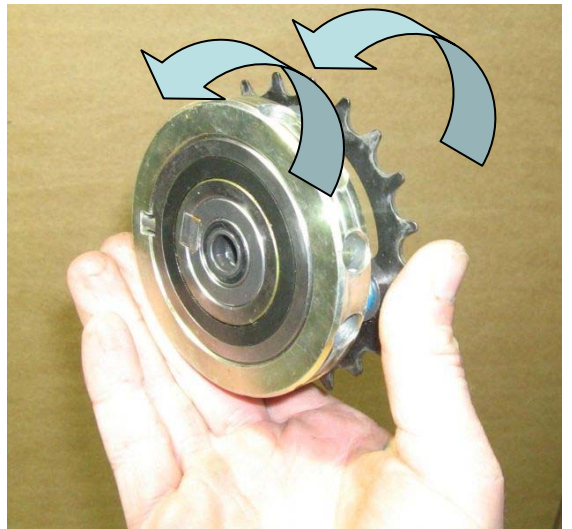


With Step in Engagement ring facing sprocket

For the left side (as sitting on the Trike) the Engagement Ring should turn the sprocket forwards when orientated as pictured.



For the right side (as sitting on the Trike) the Engagement Ring should turn the sprocket forwards when orientated as pictured.



4. Replace Chain ring bolts. Do not over-tighten. (5-10NM, 44-88 ins/lbs)

The preferred method is using a 'Chain Whip' to hold the sprocket whilst tightening the bolts with a 5mm allen key



5. Locate Drive Clutch and Inner key on Sprocket Carrier

NOTE: be very careful to make sure the Inner key is correctly aligned with the slot in the drive clutch and the slot in the sprocket carrier.

NOTE: Drive clutch must be orientated so that the step in the gold engagement ring is facing inwards towards the chain ring. Check that the Drive clutch is freewheeling the correct direction before reassembly.



Step facing sprocket



6. Place a block of wood/metal over Drive Clutch (must be large enough to cover engagement ring as well as clutch)

7. Apply force to Drive clutch to push onto Sprocket carrier

NOTE: be very careful to make sure the inner key stays aligned with slots whilst pressing in

8. Refit to Trike

9. Go Ride!

